



---

**New & Exclusive!**

Looselay installation  
Ready to walk on straight away!

---

**Taralay  
Impression hop**

The looselay solution, easier, quicker...  
and eco-cycle friendly

**Gerflor®**

# Eco-design valued at each stage of the life cycle

## GERFLOR COMMITED

to communicating transparently about the carbon impact of its products and focusing on eco-design, including the use of sustainable raw materials, the sustainability of its products and circular economy

## 1- Raw materials

**+ 15%** Recycled content



TVOC < 10 micrograms/m<sup>3</sup>



Reach compliant\*

## 4- A second life made easier



100% recyclable



Uninstall and re-use:

- Flooring can be uninstalled without damaging either the product or the surface underneath
- Flooring can be re-used for another building



Easy to recycle

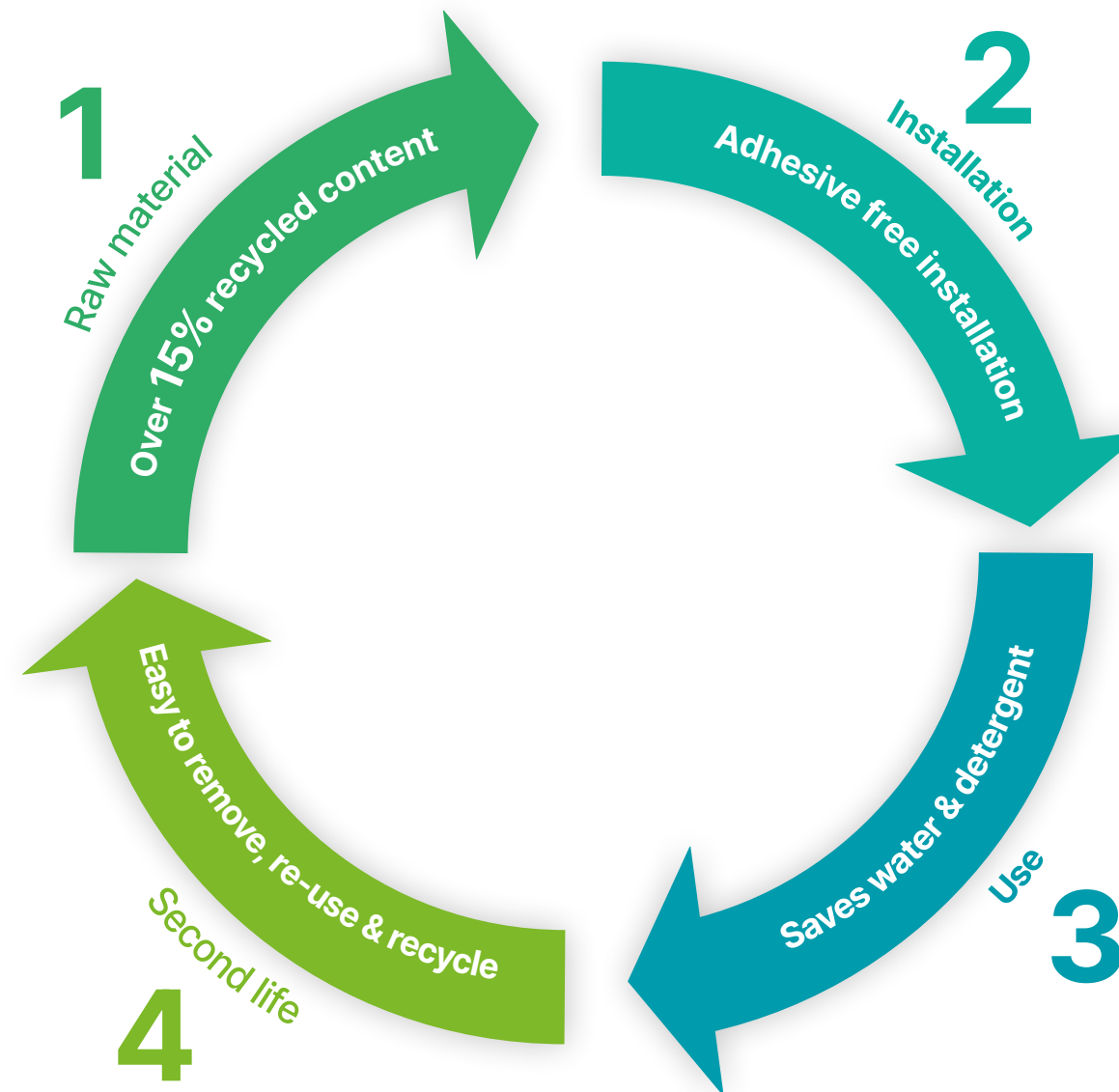
- Qualifies for the **the Second Life Programme**
- Flooring is incorporated back into our production lines



A unique partnership with Paprec, recycling programmes that are certified by Europlast



Accelerating recycling is essential for building a more circular economy. Preserving resources and reducing the carbon footprint of our business are our commitments for Sustainable Development.



## 2- Installation

made easy in busy environments



**hop** Reinforced holding tape!



Adhesive free



Reduced downtime



Qualifies for the **Second Life Programme**

## 3- Use

Long-lasting performance



Protocolsol® 2: stain resistant water-repellent surface saves water and detergent



Withstands wheeling heavy loads (straight or circular) up to 500 kg



Excellent resistance to indentation - 0.03 mm (compact) / 0.08mm (acoustic)



Excellent stability, even during temperature changes: expansion < 0.03%



Improved resistance to moisture

# Taralay Impression hop



Nature Oak Dark 1056 16,6 cm



Raintree Natural 1077 2 cm  
Scan scale: 20%



Infinity Greige 0680  
No plank Continuous design



Habana 3D Trinidad 1069 16,6 cm



Nature Oak Blond 1053 16,6 cm



Rivau Nature 1110 7 cm  
Scan scale: 40%  
35 cm



Wood Fusion Nature 1104 20 cm  
Echelle scan produit : 40%



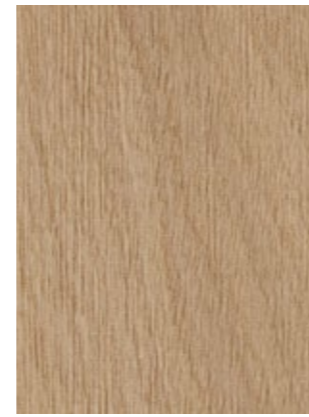
Noma Ice 0373 16,6 cm



Habana 3D Vinales 1070 16,6 cm



Nature Oak Clear 1055 16,6 cm



Charme Kraft 1093 20 cm



Gentlemen Clear 0770



Finesse Brown 1063



Finesse Paille 1065



Gentlemen Denim 1068



All colours available in ACOUSTIC 19dB & COMPACT 8dB



Colours available in stock

Others colours on order minimum 700 sqm

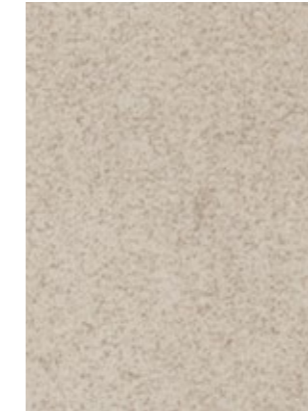
SAMPLES



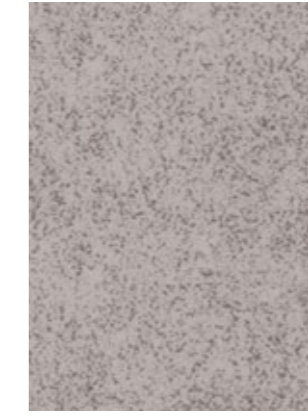
MADE & RECYCLED IN FRANCE



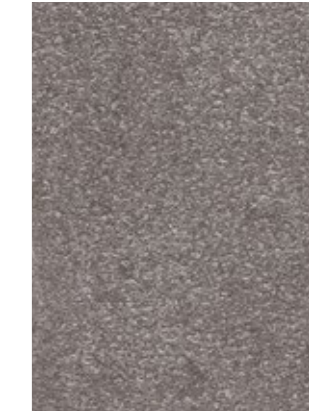
Rough Beige 1028



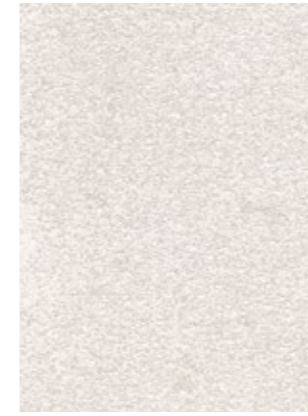
Cemento Genova 0523



Cemento Brescia 0543



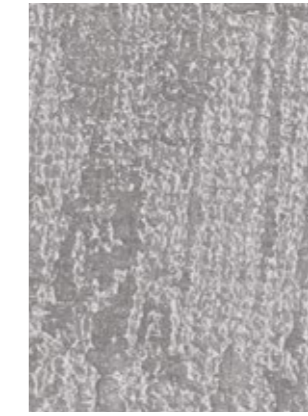
Cemento Firenze 1025



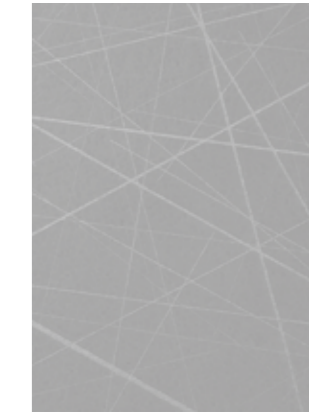
Cemento Roma 1026



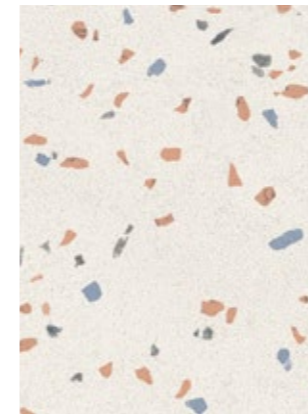
Uni Matt Grey 0832



Rough Grey 1029



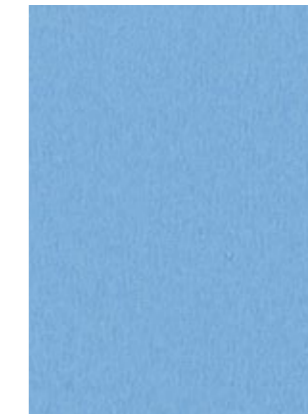
Nest Metal 0745\*\*  
Scan scale: 40%



Terrazzo Napoli 1060  
Scan scale: 40%



Cemento Napoli 1024



Uni Matt Indigo 1078



Uni Matt Teal 1085



Envol Forest 1099  
Scan scale: 40%



Uni Matt Corail 1091



Uni Matt Light Green 1082

# Taralay Impression **hop**

Exclusive product construction, especially developed for looselay installation

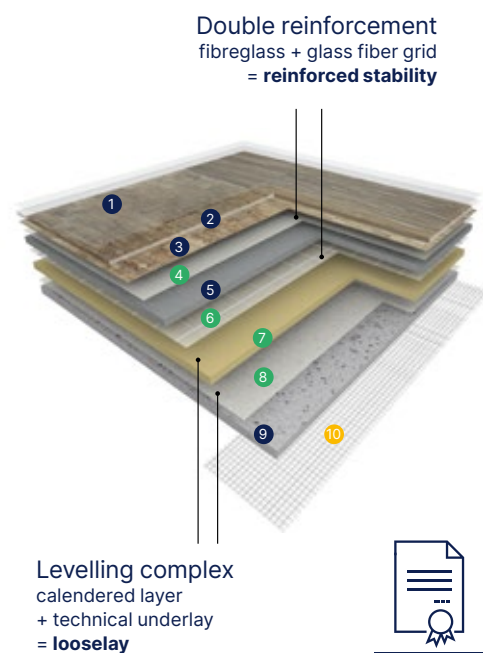
## A stable and expansion-resistant looselay flooring

The **double** fiberglass + glass laid scrim reinforcement ensures excellent product maintenance.

The looselay layer that is made of **recycled materials** combined with a technical **underlay** improves the product's adhesion to the floor.



1	<b>Protacosol® 2 extra-matt surface treatment</b>	Easy to clean Stain repellent shield	Maintenance is less tiring Saves water and detergent
2	<b>Transparent wear layer</b>		
3	<b>Design</b>	True to nature pattern designed with solvent free natural inks	Designs you can identify with Environment friendly
4	<b>Fibreglass</b>	Increased dimensional stability	Highly resistant to heavy duty traffic A durable flooring
5	<b>Compact interlayer</b>	Reinforced intermediate layers	
6	<b>Glass fiber grid</b>		
7	<b>Calendared layer with recycled content</b>	Evenly balanced components Improved resistance to moisture	Quick and easy to install
8	<b>Technical underlayer</b>		
9	<b>High density foam (acoustic version)</b>	Acoustic insulation 19dB	Pleasantly muted environments
10	<b>hop Reinforced holding Tape</b>	Easy to position Saves time	No deterioration to underfloor when uninstalled More projects finished faster



● Layers also present in Taralay Impression (glue down)    ● Specific layers Taralay Impression **hop** (looselay installation)    ● **hop** holding tape

# Ready to walk on straight away!

**+30%**  
Optimized installation means more projects finished faster



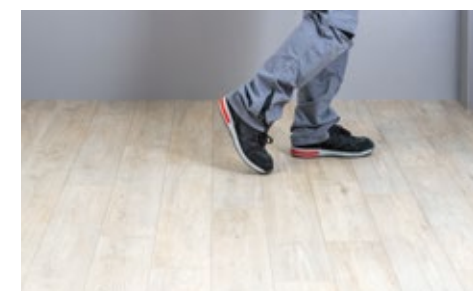
1. Clean the subfloor and mark the position



2. Place the **hop** holding tape and position rolls



3. Remove the protective film and unroll the flooring



4. Ready to walk on straight away!



### hop holding tape!

- Reinforced and durable
- Easy to position
- No transfer to surface underneath



### Adhesive free

- Less disruption (smell, noise, dust)
- Can be installed on existing flooring (including asbestos vinyl tiles)\*
- Reduced downtime



### Can be walked on immediately

- Less disruption for visitors and staff
- No need to close during installation



### Quick and easy to remove

- Removal time reduced by 50% in renovations, without damaging the surface underneath








### A valued second life

- Easy to re-install
- Flooring cuts are incorporated back into the production lines



\*detailed installation guidelines on our website

			Taralay Impression <b>hop</b> Acoustic	Taralay Impression <b>hop</b> Compact
<b>Description</b>				
Total thickness	EN ISO 24346	mm	4.35	2.30
	ASTM F386-02	inch	0.17"	0.09"
Thickness of wearlayer	EN ISO 24340	mm	0.70	0.70
	ASTM F410-02	inch	0.028"	0.028"
Weight	EN ISO 23997	g/m <sup>2</sup>	3670	3125
	-	lbs/sq.ft	8.09	7.05
Width/length of sheet	EN ISO 24341	cm / lm	200 / 20	200 / 20
	-	feet - inch	6'6" / 65'7"	6'6" / 65'7"
<b>Classification</b>				
Norm/product specification	-	-	EN ISO 11638	EN ISO 10582
European classification	EN ISO 10874	class	34 - 42	34 - 43
Fire rating	EN 13501-1	class	B <sub>fl</sub> -s1	B <sub>fl</sub> -s1
Static electrical propensity	EN 1815	kV	< 2	< 2
Slip resistance wet: ramp test with oil	EN 16165 app B	classe	R10	R10
<b>Performances</b>				
Wear resistance	EN 660.2	mm <sup>3</sup>	≤ 2.0	≤ 2.0
Wear group	QB 30	group	T	T
Type binder content	EN ISO 10582	type	I	I
Dimensional stability (requirement)	EN ISO 23999	%	≤ 0.40	≤ 0.40
Dimensional stability (measured value)	-	%	0,03	0,03
Residual indentation (requirement)	EN ISO 24343-1	mm	≤ 0.20	≤ 0.10
Residual indentation (average measured value)	-	mm	≈ 0.08	≈ 0.03
Impact sound insulation	EN ISO 717-2	dB	19	8
Castor chair test (type H)	ISO 4918	-	OK	OK
Thermal conductivity	EN ISO 10456	W/(m.K)	0.25	0.25
Colour fastness	EN 20 105 - B02	degree	≥ 6	≥ 6
Surface treatment	-	-	PROTECSOL® 2	PROTECSOL® 2
Chemical products resistance <sup>(1)</sup>	EN ISO 26987	-	OK	OK
Anti-bacterial activity (E. coli - S. aureus - MRSA) <sup>(2)</sup>	ISO 22196	-	> 99% inhibits growth	> 99% inhibits growth
Antiviral activity (human coronavirus) after 2h <sup>(2)</sup>	ISO 21702	-	> 99.7 % virucidal activity	> 99.7 % virucidal activity
<b>Environment / Indoor Quality Air</b>				
TVOC after 28 days	ISO 16000-6	microgram/m <sup>3</sup>	< 10	< 10
Certification			Floorscore®	Floorscore®
<b>CE marking</b>				
	EN 14041	-	   	

(1) Regarding the resistance to chemicals, please download the corresponding leaflet from our website.  
(2) The implementation of an effective cleaning regime is the most important defence against infection.

Product description and technical data sheets on [gerflor.com](https://gerflor.com)

Installation and Maintenance Guidelines, Complementary ranges available on our Gerflor website.

 Rubber leaves indelible stains on vinyl floorings: do not use mats with rubber backing and replace tubular furniture feet with those made of PVC or polyamide. Place mats of sufficient length at entrances to reduce outside sources of dirt.

**IMPORTANT:** The information contained in this document is valid from 01/03/2023 and is subject to change at any time without notice. In the context of constantly changing technology, our customers are responsible, prior to any use, for checking with us that this document is the version in force.

## We care / we act Our Commitments for a Sustainable future

  
**CARBON FOOTPRINT\***  
-20 % kg CO<sub>2</sub> equivalent/m<sup>2</sup> between 2020 and 2025

  
**BIOSOURCED CONTENT\*\***  
10 % by 2025

  
**RECYCLED CONTENT**  
30 % by 2025

  
**ADHESIVE FREE\*\*\***  
35 % by 2025

  
**ANNUAL VOLUME RECYCLED**  
60 000 t by 2025

**Gerflor®**

\* Scopes 1 and 2 defined in the GHG protocol \*\* % of activity with biosourced materials \*\*\* % of activity - adhesive free solution